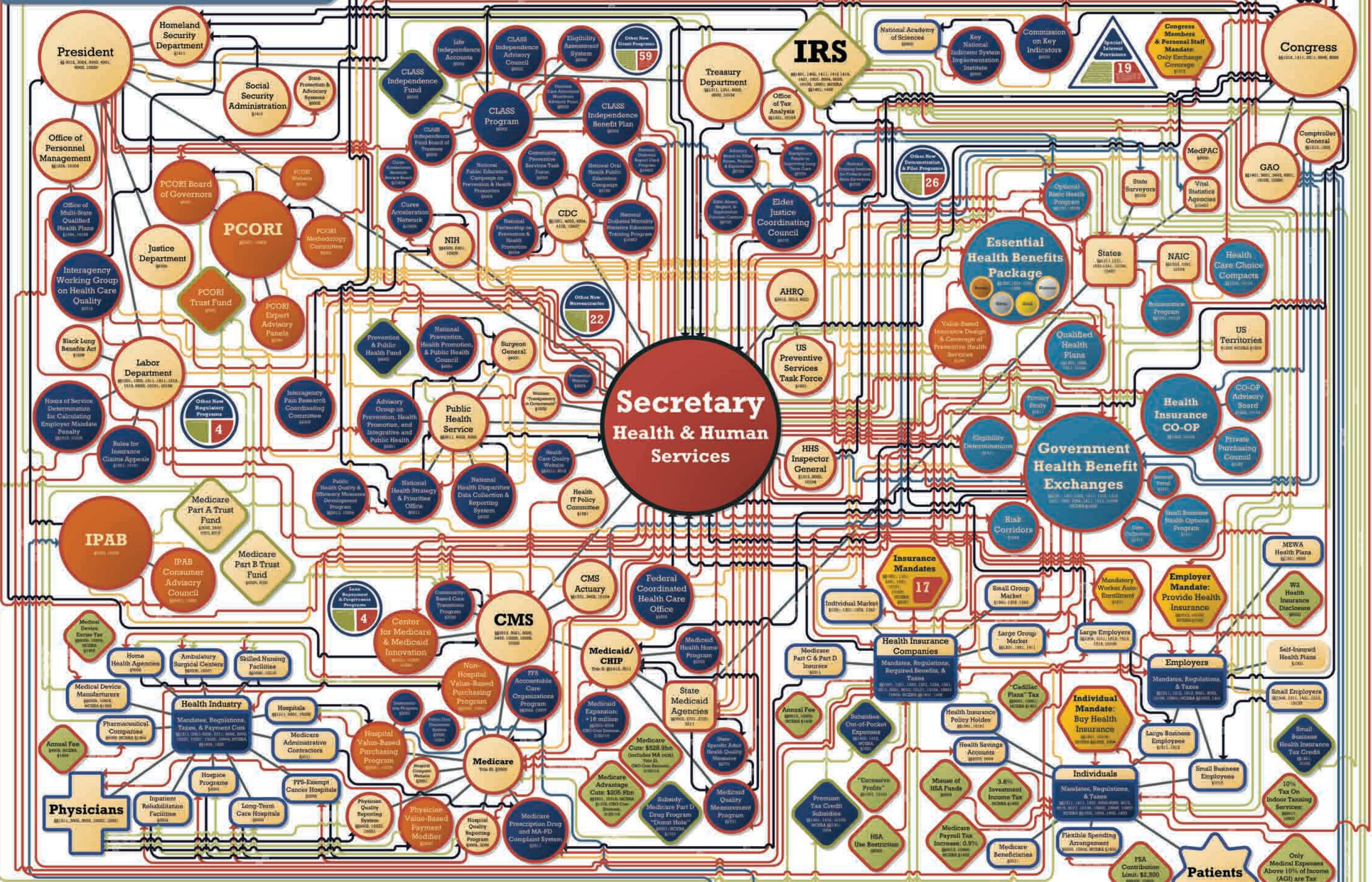


# Your New Health Care System



New Government	Expanded Government	Private	New Relationships
<ul style="list-style-type: none"> <li>Rationing Potential</li> <li>Involvement in Health Insurance Market</li> <li>Other Expansions</li> <li>Represents Bundles of Additional Entities</li> </ul>	<ul style="list-style-type: none"> <li>Mandates</li> <li>Taxes &amp; Monetary Fees/ Penalties/Cuts</li> <li>Trust Fund (Rationing Potential)</li> <li>Other New Trust Funds/ Monetary Benefits</li> </ul>	<ul style="list-style-type: none"> <li>Government with Expanded Authority/ Responsibility</li> <li>Government Financial Entity with New Inflows/ Outflows</li> <li>State/Territory with Expanded Authority/ Responsibility</li> </ul>	<ul style="list-style-type: none"> <li>Private Entity with New Mandates/ Regulations/ Responsibilities</li> <li>Unchanged Private Entity</li> <li>Special Interest Provisions</li> </ul>

Regulations/ Requirements/Mandates	Other
<ul style="list-style-type: none"> <li>Regulations/ Requirements/Mandates</li> <li>Oversight</li> <li>Money Flows</li> <li>Consultation/Advisory/ Info Sharing</li> <li>Structural Connections (Includes Existing)</li> </ul>	<ul style="list-style-type: none"> <li>AGI: Adjusted Gross Income</li> <li>AHRQ: Agency for Healthcare Research and Quality</li> <li>CDC: Centers for Disease Control &amp; Prevention</li> <li>CHIP: Children's Health Insurance Program</li> <li>CLASS: Community Living Assistance Services &amp; Supports</li> <li>CMS: Centers for Medicare &amp; Medicaid Services</li> <li>CO-OP: Consumer Operated &amp; Oriented Program</li> <li>FFS: Fee-for-Service</li> <li>FSA: Flexible Spending Arrangement</li> <li>GAO: Government Accountability Office</li> <li>HCEEA: Health Care &amp; Education Reconciliation Act</li> <li>HHS: Health &amp; Human Services Department</li> <li>HSA: Health Savings Account</li> <li>IPAB: Independent Payment Advisory Board</li> <li>IRS: Internal Revenue Service</li> <li>MA-PD: Medicare Advantage Prescription Drug</li> <li>MedPAC: Medicare Payment Advisory Commission</li> <li>MERD: Medical Early Risk Detection</li> <li>EALORS: Executive Auxiliary Linked Office Regional Systems</li> <li>MEWA: Multiple Employer Welfare Arrangement</li> <li>NAIC: National Association of Insurance Commissioners</li> <li>NIH: National Institutes of Health</li> <li>PCORI: Patient-Centered Outcomes Research Institute</li> <li>PPS: Prospective Payment System</li> </ul>

**Patient Protection & Affordable Care Act, P.L. 111-148;**  
**Health Care & Education Reconciliation Act, P.L. 111-152**  
 Prepared by: Joint Economic Committee, Republican Staff  
 Congressman Kevin Brady, Senior House Republican  
 Senator Sam Brownback, Ranking Member

This poster represents less than 1/3rd of the gigantic bureaucracy developed in Obama Care. In essence, all health care decisions will be made by nameless, faceless, heartless bureaucrats in the interest of what's best for the greater good to meet global budgets.

**BOTTOM LINE: HEALTH CARE DECISIONS WILL BE MADE BY THIS GIGANTIC BUREAUCRACY**